

Vias Arteriais - Avenida Prudente de Moraes

Luminária: 90W
Altura: 7 m
Distância entre Postes: 30 m
Via: 12 m
Calçada: 2,5 m
Braço: 3 m

Rua/Av.: Av. Prudente de Moraes
Classificação de Via/Lux: V1 / 30 lx
Classificação de Calçada/Lux: P2 / 10 lx

Date: 04.04.2015
Operator:

Operator
Telephone
Fax
e-Mail

Table of contents

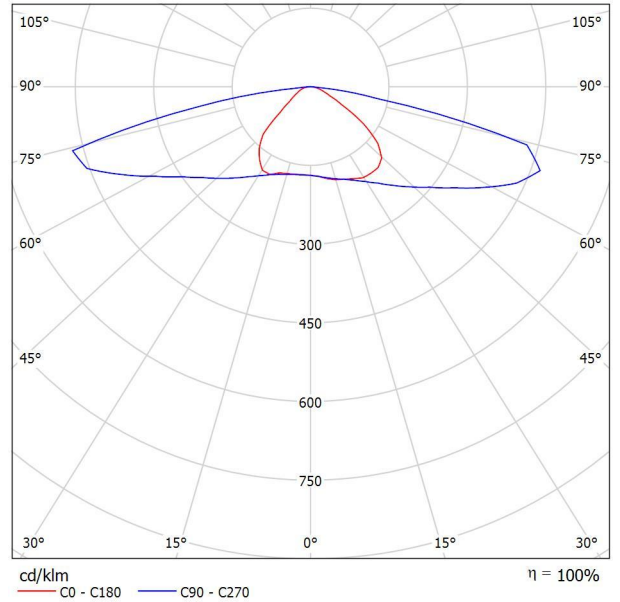
Vias Arteriais - Avenida Prudente de Moraes	
Project Cover	1
Table of contents	2
Luminária 90W	
Luminaire Data Sheet	3
Projeto Luminotécnico	
Planning data	4
Photometric Results	6
3D Rendering	8
False Colour Rendering	9
Valuation Fields	
Via	
Value Chart (E)	10
Observer	
Observador 1	
Isolines (L)	11
Observador 2	
Isolines (L)	12
Via	
Value Chart (E)	13
Observer	
Observador 3	
Isolines (L)	14
Observador 4	
Isolines (L)	15
Calçada	
Value Chart (E)	16
Calçada	
Value Chart (E)	17

Operator
 Telephone
 Fax
 e-Mail

Luminária 90W / Luminaire Data Sheet

See our luminaire catalog for an image of the luminaire.

Luminous emittance 1:



Luminaire classification according to CIE: 100
 CIE flux code: 31 65 93 100 100

Due to missing symmetry properties, no UGR table can be displayed for this luminaire.

Operator
Telephone
Fax
e-Mail

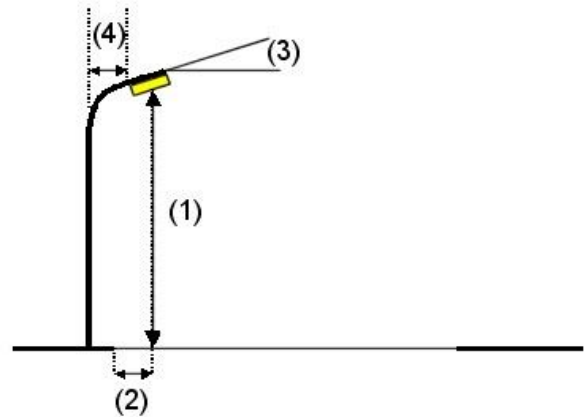
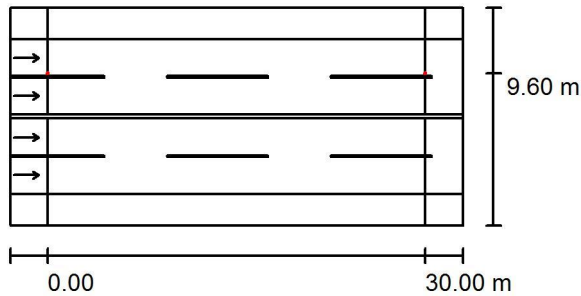
Projeto Luminotécnico / Planning data

Street Profile

Calçada	(Width: 2.500 m)
Via	(Width: 6.000 m, Number of lanes: 2, tarmac: R3, q0: 0.070)
Canteiro Central	(Width: 0.300 m, Height: 0.000 m)
Via	(Width: 6.000 m, Number of lanes: 2, tarmac: R3, q0: 0.070)
Calçada	(Width: 2.500 m)

Maintenance factor: 1.00

Luminaire Arrangements



Luminaire:	Luminária 90W
Luminous flux (Luminaire):	8387 lm
Luminous flux (Lamps):	8387 lm
Luminaire Wattage:	97.2 W
Arrangement:	Single row, top
Pole Distance:	30.000 m
Mounting Height (1):	7.000 m
Height:	6.900 m
Overhang (2):	2.700 m
Boom Angle (3):	0.0 °
Boom Length (4):	3.000 m

Maximum luminous intensities	
at 70°:	536 cd/klm
at 80°:	775 cd/klm
at 90°:	82 cd/klm

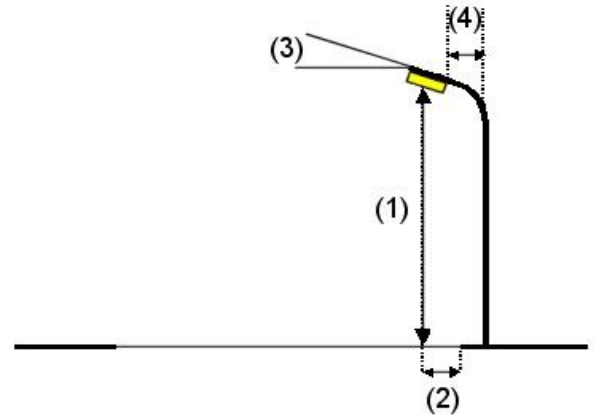
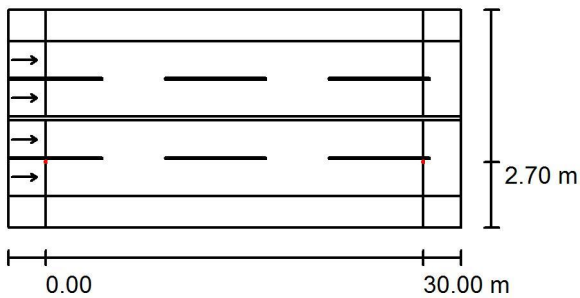
Any direction forming the specified angle from the downward vertical, with the luminaire installed for use.

Arrangement complies with glare index class D.3.

Operator
Telephone
Fax
e-Mail

Projeto Luminotécnico / Planning data

Luminaire Arrangements



Luminaire:	Luminária 90W
Luminous flux (Luminaire):	8387 lm
Luminous flux (Lamps):	8387 lm
Luminaire Wattage:	97.2 W
Arrangement:	Single row, bottom
Pole Distance:	30.000 m
Mounting Height (1):	7.000 m
Height:	6.900 m
Overhang (2):	2.700 m
Boom Angle (3):	0.0 °
Boom Length (4):	3.000 m

Maximum luminous intensities

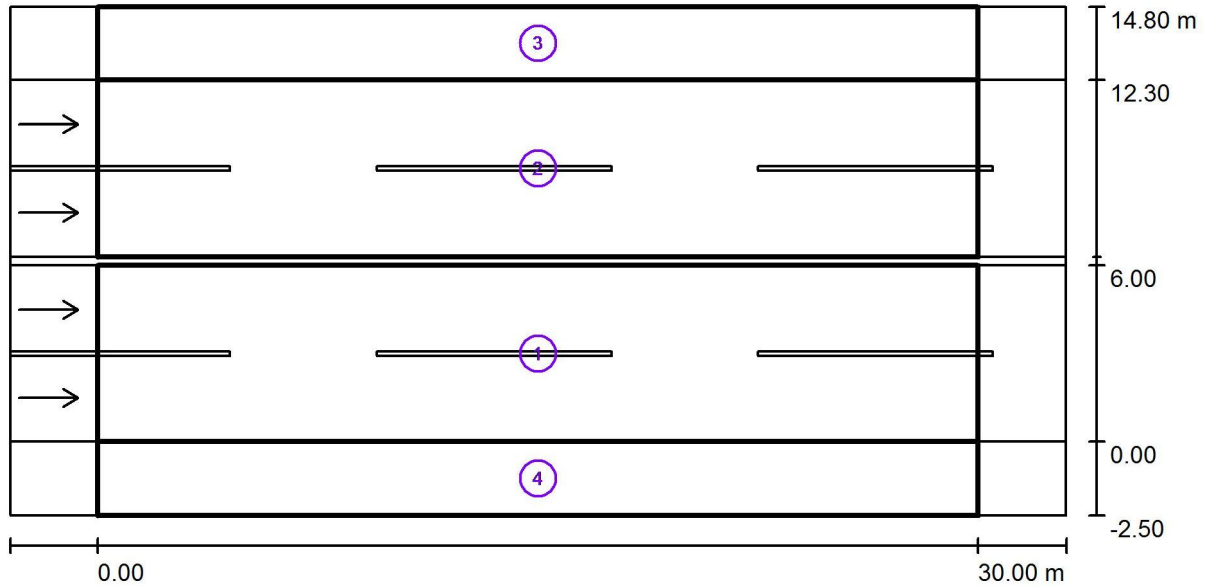
at 70°:	536 cd/klm
at 80°:	775 cd/klm
at 90°:	82 cd/klm

Any direction forming the specified angle from the downward vertical, with the luminaire installed for use.

Arrangement complies with glare index class D.3.

Operator
Telephone
Fax
e-Mail

Projeto Luminotécnico / Photometric Results



Maintenance factor: 1.00

Scale 1:258

Calculation Field List

- 1 Via
Length: 30.000 m, Width: 6.000 m
Grid: 10 x 6 Points
Accompanying Street Elements: Via.
tarmac: R3, q0: 0.070
Selected Lighting Class: ME4a

(Not all lighting performance requirements are met.)

	L_{av} [cd/m ²]	U0	UI	TI [%]	SR
Calculated values:	2.36	0.52	0.80	10	0.78
Required values according to class:	≥ 2.00	≥ 0.40	≥ 0.70	≤ 10	≥ 0.50
Fulfilled/Not fulfilled:	✓	✓	✓	✓	✓

Operator
Telephone
Fax
e-Mail

Projeto Luminotécnico / Photometric Results

Calculation Field List

2 Via
Length: 30.000 m, Width: 6.000 m
Grid: 10 x 6 Points
Accompanying Street Elements: Via.
tarmac: R3, q0: 0.070
Selected Lighting Class: ME4a

(Not all lighting performance requirements are met.)

	L_{av} [cd/m ²]	U0	UI	TI [%]	SR
Calculated values:	2.38	0.52	0.86	10	0.78
Required values according to class:	≥ 2.00	≥ 0.40	≥ 0.70	≤ 10	≥ 0.50
Fulfilled/Not fulfilled:	✓	✓	✓	✓	✓

3 Calçada
Length: 30.000 m, Width: 2.500 m
Grid: 10 x 3 Points
Accompanying Street Elements: Calçada.
Selected Lighting Class: CE5

(All lighting performance requirements are met.)

	E_{av} [lx]	U0
Calculated values:	15.85	0.56
Required values according to class:	≥ 5.00	≥ 0.20
Fulfilled/Not fulfilled:	✓	✓

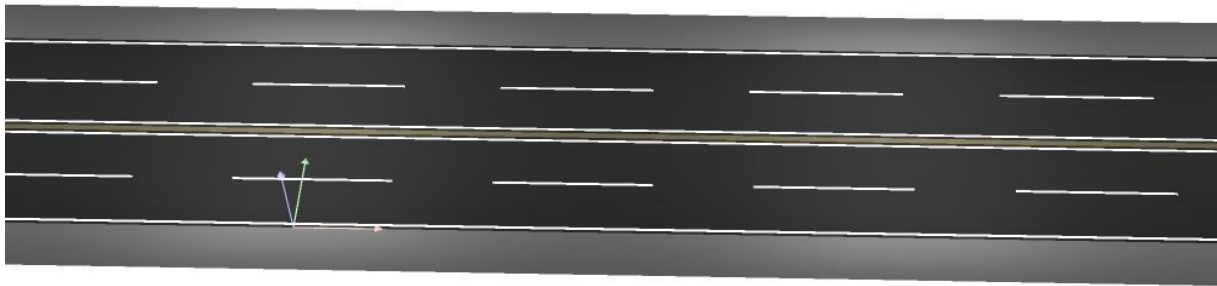
4 Calçada
Length: 30.000 m, Width: 2.500 m
Grid: 10 x 3 Points
Accompanying Street Elements: Calçada.
Selected Lighting Class: CE5

(All lighting performance requirements are met.)

	E_{av} [lx]	U0
Calculated values:	15.85	0.56
Required values according to class:	≥ 5.00	≥ 0.20
Fulfilled/Not fulfilled:	✓	✓

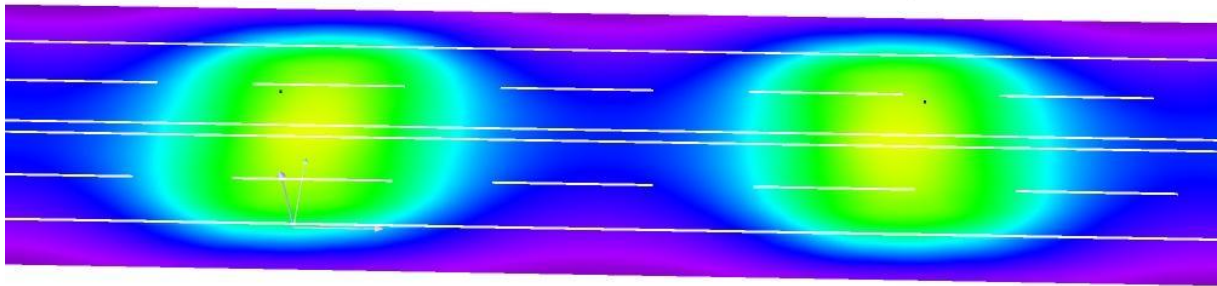
Operator
Telephone
Fax
e-Mail

Projeto Luminotécnico / 3D Rendering



Operator
Telephone
Fax
e-Mail

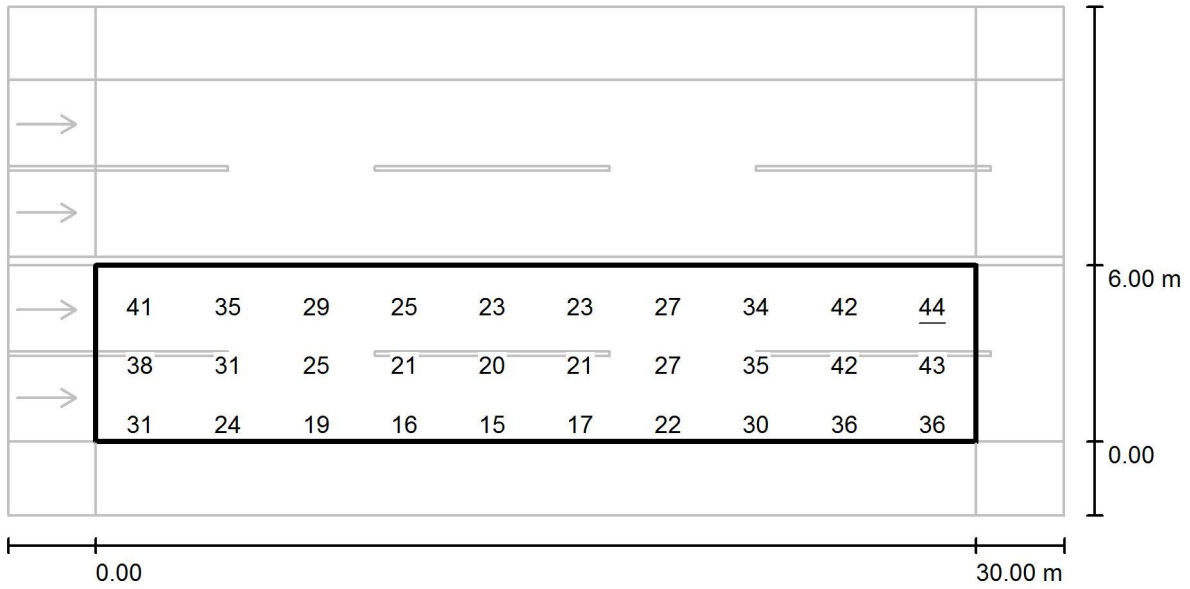
Projeto Luminotécnico / False Colour Rendering



0 10 20 30 40 50 60 70 80 lx

Operator
Telephone
Fax
e-Mail

Projeto Luminotécnico / Via / Value Chart (E)



Values in Lux, Scale 1 : 258

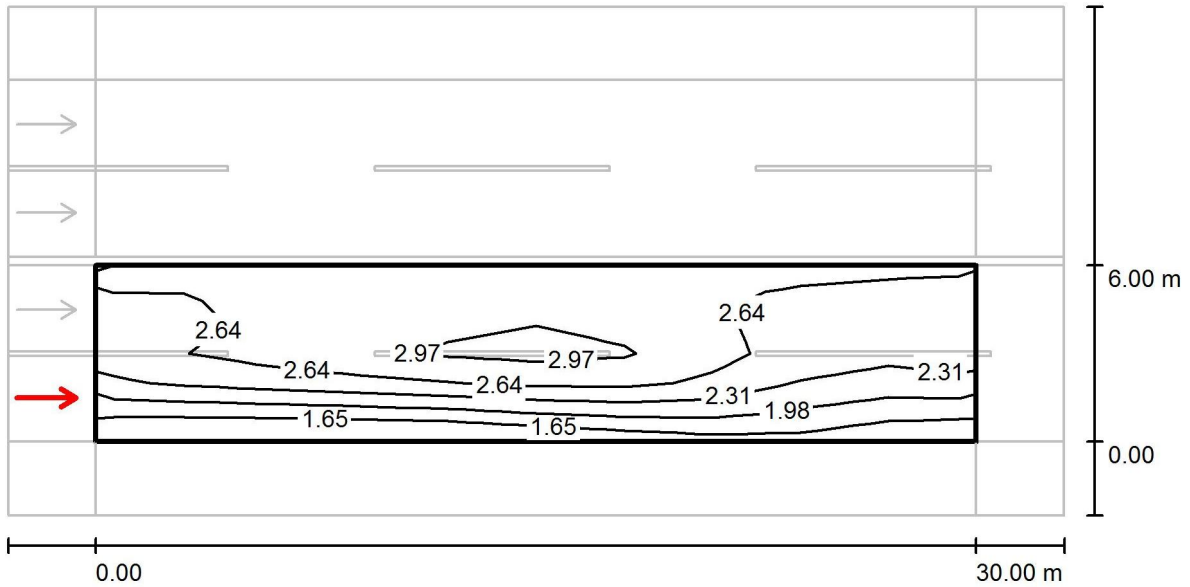
Not all calculated values could be displayed.

Grid: 10 x 6 Points

E_{av} [lx]	E_{min} [lx]	E_{max} [lx]	$u0$	E_{min} / E_{max}
30	15	44	0.503	0.344

Operator
Telephone
Fax
e-Mail

Projeto Luminotécnico / Via / Observador 1 / Isolines (L)



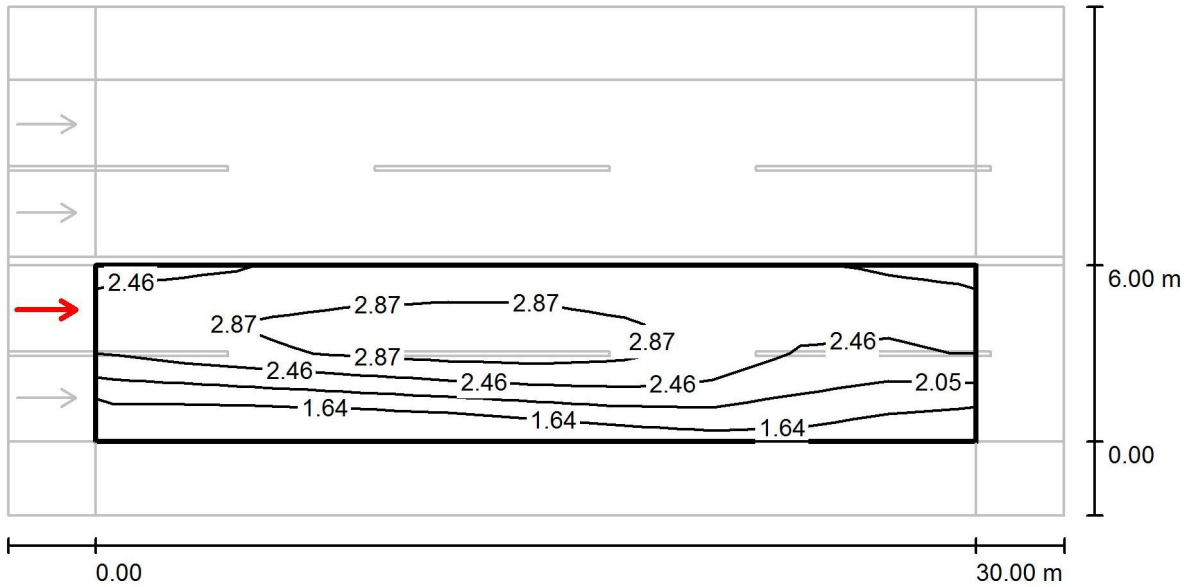
Values in Candela/m², Scale 1 : 258

Grid: 10 x 6 Points
Observer Position: (-60.000 m, 1.500 m, 1.500 m)
tarmac: R3, q0: 0.070

	L_{av} [cd/m²]	U0	UI	TI [%]
Calculated values:	2.45	0.58	0.80	10
Required values according to class ME4a:	≥ 2.00	≥ 0.40	≥ 0.70	≤ 10
Fulfilled/Not fulfilled:	✓	✓	✓	✓

Operator
Telephone
Fax
e-Mail

Projeto Luminotécnico / Via / Observador 2 / Isolines (L)



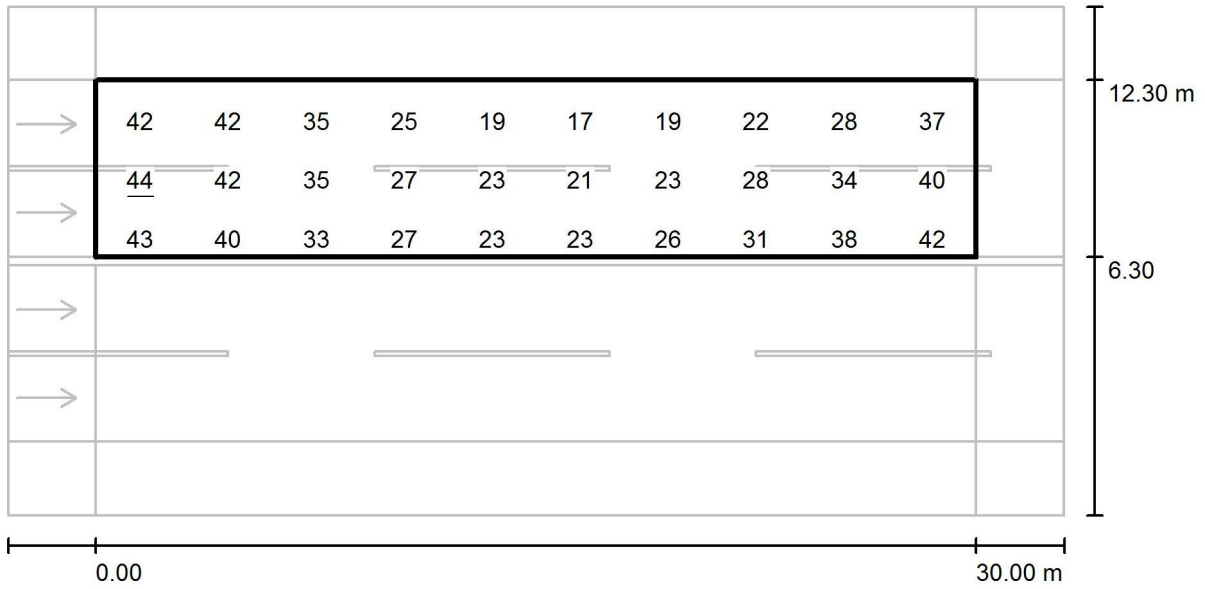
Values in Candela/m², Scale 1 : 258

Grid: 10 x 6 Points
Observer Position: (-60.000 m, 4.500 m, 1.500 m)
tarmac: R3, q0: 0.070

	L_{av} [cd/m ²]	U0	UI	TI [%]
Calculated values:	2.36	0.52	0.86	10
Required values according to class ME4a:	≥ 2.00	≥ 0.40	≥ 0.70	≤ 10
Fulfilled/Not fulfilled:	✓	✓	✓	✓

Operator
Telephone
Fax
e-Mail

Projeto Luminotécnico / Via / Value Chart (E)



Values in Lux, Scale 1 : 258

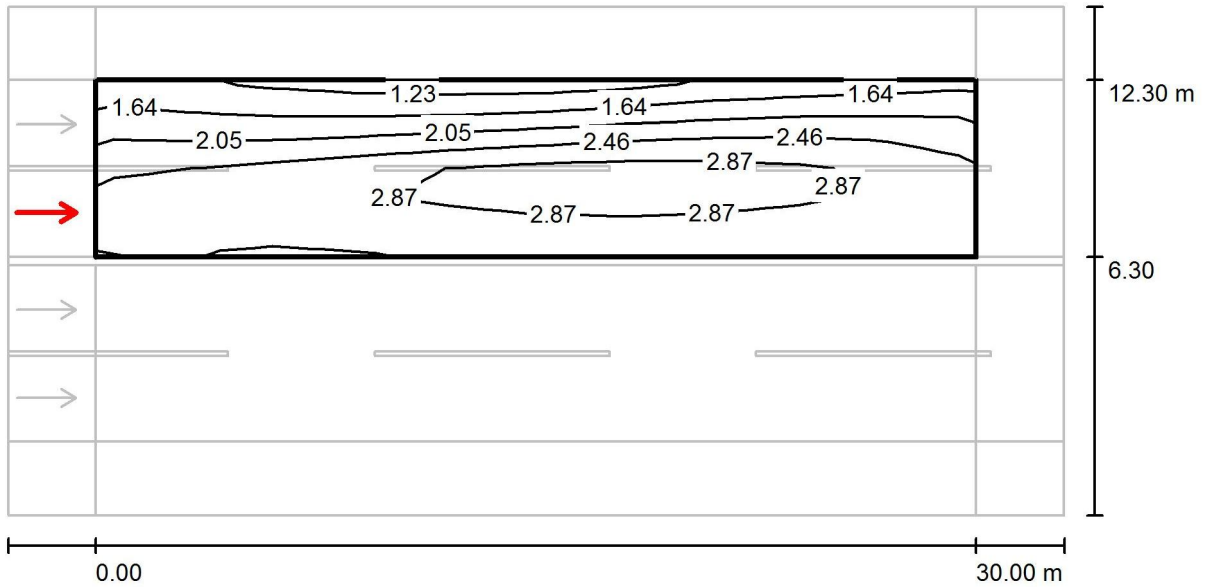
Not all calculated values could be displayed.

Grid: 10 x 6 Points

E_{av} [lx]	E_{min} [lx]	E_{max} [lx]	$u0$	E_{min} / E_{max}
30	15	44	0.503	0.344

Operator
Telephone
Fax
e-Mail

Projeto Luminotécnico / Via / Observador 3 / Isolines (L)



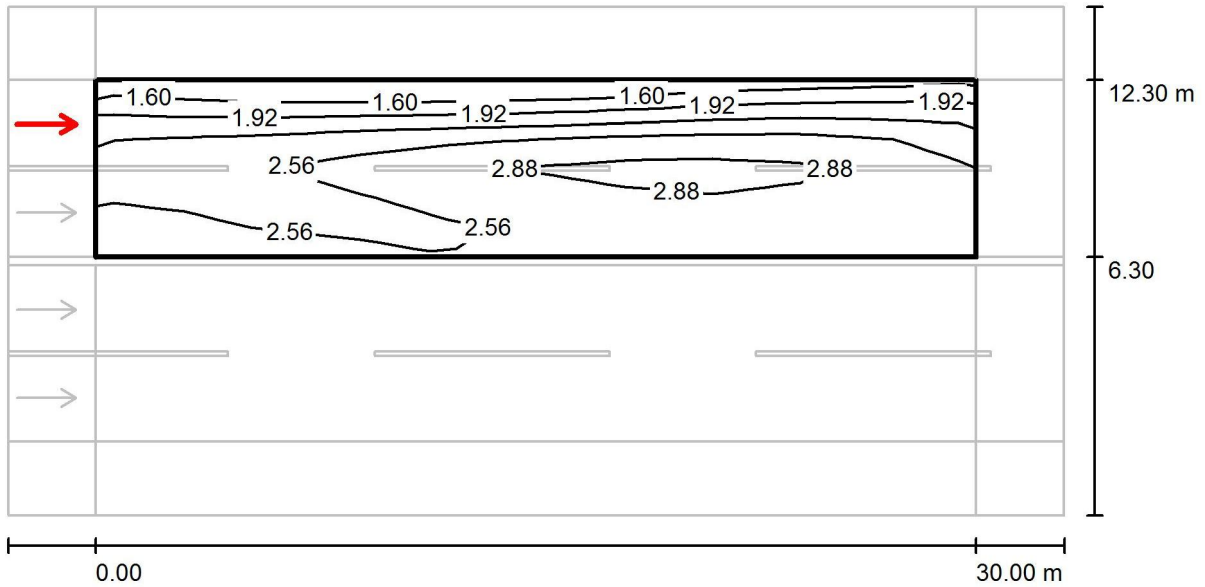
Values in Candela/m², Scale 1 : 258

Grid: 10 x 6 Points
Observer Position: (-60.000 m, 7.800 m, 1.500 m)
tarmac: R3, q0: 0.070

	L_{av} [cd/m ²]	U0	UI	TI [%]
Calculated values:	2.38	0.52	0.90	10
Required values according to class ME4a:	≥ 2.00	≥ 0.40	≥ 0.70	≤ 10
Fulfilled/Not fulfilled:	✓	✓	✓	✓

Operator
Telephone
Fax
e-Mail

Projeto Luminotécnico / Via / Observador 4 / Isolines (L)



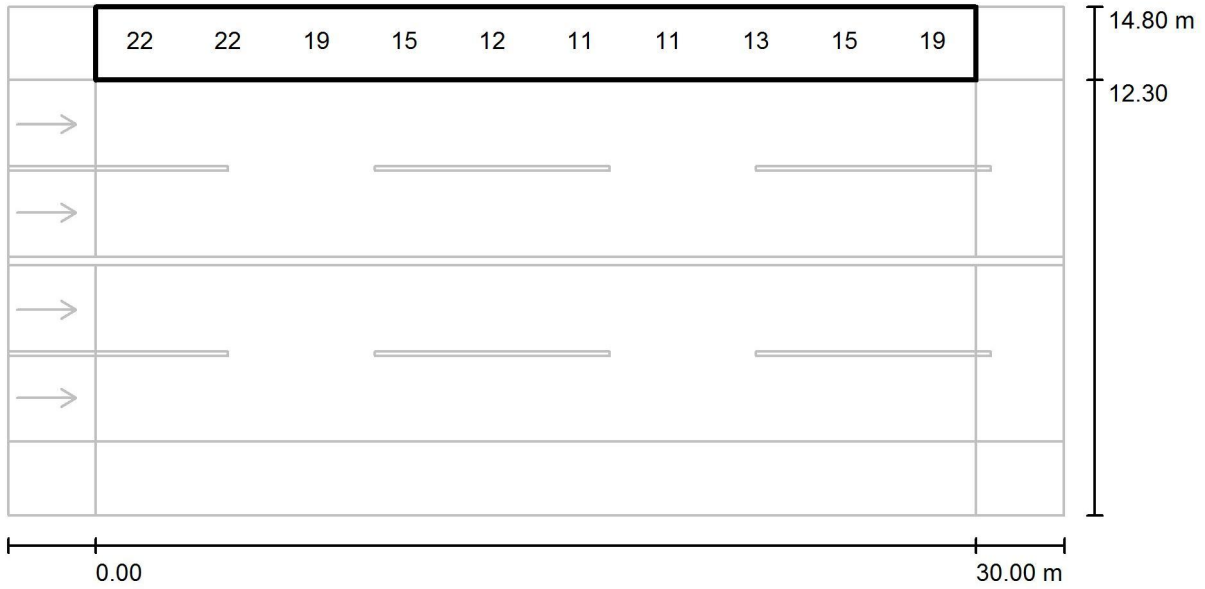
Values in Candela/m², Scale 1 : 258

Grid: 10 x 6 Points
Observer Position: (-60.000 m, 10.800 m, 1.500 m)
tarmac: R3, q0: 0.070

	L_{av} [cd/m ²]	U0	UI	TI [%]
Calculated values:	2.42	0.58	0.86	10
Required values according to class ME4a:	≥ 2.00	≥ 0.40	≥ 0.70	≤ 10
Fulfilled/Not fulfilled:	✓	✓	✓	✓

Operator
Telephone
Fax
e-Mail

Projeto Luminotécnico / Calçada / Value Chart (E)



Values in Lux, Scale 1 : 258

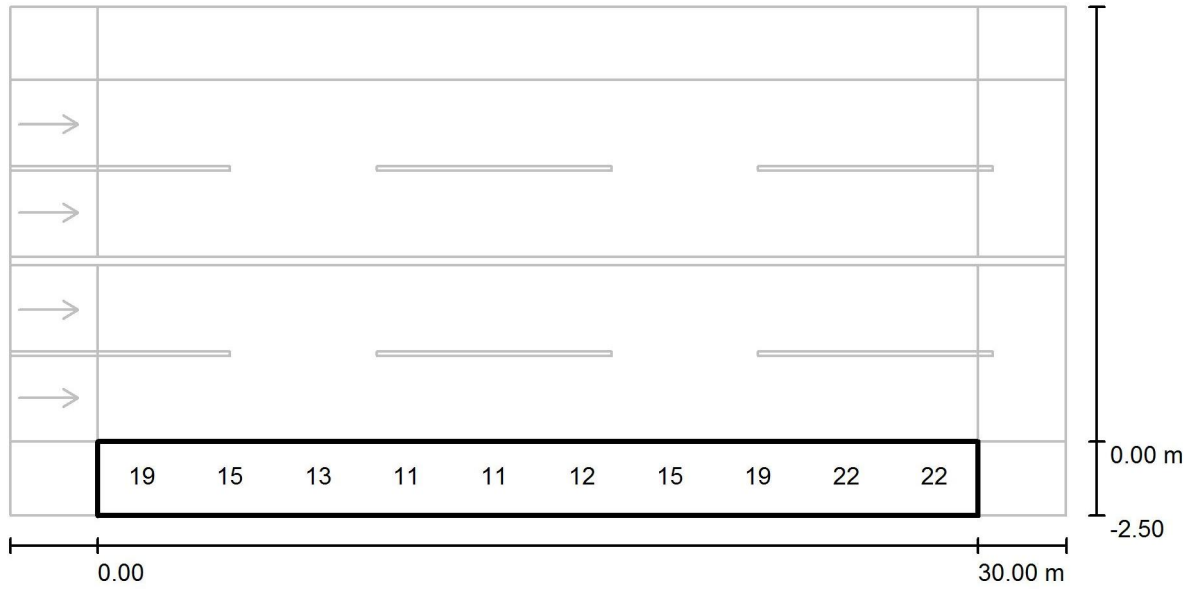
Not all calculated values could be displayed.

Grid: 10 x 3 Points

E_{av} [lx]	E_{min} [lx]	E_{max} [lx]	$u0$	E_{min} / E_{max}
16	8.90	29	0.561	0.309

Operator
Telephone
Fax
e-Mail

Projeto Luminotécnico / Calçada / Value Chart (E)



Values in Lux, Scale 1 : 258

Not all calculated values could be displayed.

Grid: 10 x 3 Points

E_{av} [lx]	E_{min} [lx]	E_{max} [lx]	u0	E_{min} / E_{max}
16	8.90	29	0.561	0.309